

# P-touch EDGE® PT-E500 labeler with PC connectivity and auto cutter

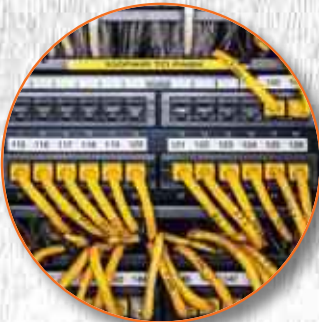
Designed by industry pros for industry pros.



Electrical



Security



Data Communication



Audio Visual

Downloads and stores custom labels and databases from your PC to take your projects to the job site





# The full-featured labeler with PC connectivity to handle bigger projects

## When industry professionals design the labeler they really want ...

The P-touch EDGE® PT-E500 is the result.

It has the powerful features they want to handle bigger, more complex projects. It can even connect to a PC and download and store data for use at the job site. But it's also remarkably easy to use by practically anyone, by design.

Clearly and accurately marking your work is the sign of a professional. In today's increasingly complex data centers it's also a necessity.

Specs on many projects now require extended ANSI/EIA/TIA 606x identifiers. As such, there's a lot more detailed information to manage, and a lot more to accommodate on each label.

The PT-E500 produces durable, laminated labels up to 24mm wide. It combines powerful technology with advanced features and intuitive operation that help make the labeling job faster, simpler and more efficient for your entire crew – without the need to read a manual.

## A new standard for jobsite accuracy and efficiency

The PT-E500 raises the bar for jobsite accuracy and efficiency with its smart technology, PC connectivity and high performance features that minimize keystrokes and dramatically increase labeling speed and productivity in the field.

With the PT-E500 practically anyone can create and print the labels they need in seconds, simply by using its clearly marked buttons, built-in preformatted templates, and by following its on-screen prompts. They can populate those labels with data from downloaded databases to minimize keystrokes, or enter the data manually using the comfortable QWERTY keyboard.

So even generating serialized labels that address ANSI/EIA/TIA-606x standards can become easier. Producing properly spaced auto-incremented patch panel labels in a single strip can go faster. So can marking wires with heat-shrink tube. Or printing cable wrap labels with rotated text. Even making barcode labels is simple with the PT-E500.

Practically every routine labeling task your crews now face – and the more challenging ones emerging – can be handled faster and more efficiently with the PT-E500.



## Smart label application keys save time

Smart label application keys offer preformatted templates for the types of labels electrical and datacom contractors, and A/V and security system installers, use frequently.

These can help almost anyone make the right label every time, quickly and easily.



## Change supplies fast with drop-in tape cassettes

The PT-E500 uses interchangeable, drop-in HGe and TZe tape cassettes that already contain all the materials required to produce durable laminated labels in the color, size or adhesive type you want. Changing label colors, sizes or adhesive types takes seconds. Just pop in the cassette you need and you're good to go.

When you make a label with the PT-E500, your text, symbols and barcodes are printed on the underside of a clear protective laminate and then bonded to the adhesive and other substrates as the label is printed. So the label that emerges is already laminated, includes an easy-peel backer, and is ready to cut, peel and apply.

The laminated labels you can produce with the PT-E500 have been engineered to stand up to harsh environments, indoors and outdoors. They can withstand temperatures from -30 degrees (C) to 100 degrees (C), moisture, harsh UV, abrasion, grease and industrial solvents like acetone, and remain affixed and clearly readable for years.

# Make bigger projects more manageable with these features

## Easy to Use

Turn on the labeling tool, the bright large LCD display helps you see clearly what you are doing

Intuitive label application keys and smart technology takes the guess work out to get the right type of label for your application every time

QWERTY keyboard helps you to enter data naturally like texting or sending a message

Print Labels From a database helps save time and helps reduce human input error.



## Powerful Features

- **Large backlit LCD display** provides at-a-glance view of label design settings, including application icons and allows you to preview and edit label markings prior to printing.
- **Automatic smart font-sizing** technology enables printing of clearly formed, readable characters on durable laminated labels up to 24mm wide – perfect for conforming to the short and long ANSI/EIA/TIA 606x identifier format.
- **Built-in automatic cutter** can be set to cut labels to specified lengths, whether they are for labeling faceplates, patch panels, punch blocks or general cable runs.
- **PC connectivity and built-in software** allow you to download and store data from common databases, as well as custom or pre-formatted label templates, which can be saved and downloaded in the office to generate labels with text, symbols and barcodes in the field. This can save time on the job and help to minimize human error.
- **Faster label printing speeds**, coupled with automated label cutting, speeds up onsite workflow and increases installation efficiency and productivity.
- **Durable laminated** labels encapsulate the print between two protective layers to ensure long-term integrity and readability. P-touch EDGE industrial thermal printers use UL-recognized labels, and the PT-E500 is compatible with HGe and TZe tapes that offer adhesive and color choices for virtually any labeling application.
- **Heat Shrink Tube (HSe)** in convenient drop in cartridges designed for the PT-E500 make switching between laminated labels and heat shrink tube easier than ever. Just swap the cartridge! Perfect when you need a smooth, lasting heat shrink identifier for narrow gage or bundled wire and cable.
- **Advanced Alpha and Numeric Serializing** allows installers to quickly pre-print labels for a project by automatically incrementing a number and/or letter individually or simultaneously.

P-touch  
**EDGE**



# Easy to use. Powerful features.

The PT-E500 was clearly designed to help make projects go faster and more efficiently – from start to finish. Drop in an HGe or TZe tape cassette for the tape color, size and adhesive type you need. Choose the application you want. Enter the text into a preformatted template or one you've created and stored on the PT-E500 already. Add industrial symbols from the hundreds built-in, and create and add industry-standard barcodes using the 9 built-in symbologies.

Then print and cut your label. Peel and apply. That's how it's done.

## Tapes for practically every application

HGe and TZe tape cassettes are available in a wide range of colors, sizes and adhesive types to match your labeling application.

### Flexible ID Tape:

For wrapping and flagging wires and cables.

### Extra-Strength Adhesive Tape:

For rough, textured and powder-coated surfaces.

### Standard Adhesive Tape:

For flat, smooth surfaces.

And now, for the PT-E500, there's **Heat Shrink Tube**.

All of these tapes are available on easy-swap, drop-in cassettes. So it only takes seconds to go from using Flexible ID Tape to wrap and flag cables and wires, to Extra-Strength Adhesive Tape to mark load centers and electrical panels, to Standard Adhesive Tape to mark outlet covers and faceplates.

## Specifications

Print Speed	Up to 1.2 ips (30mm/sec) – HGe, TZe Tape
Lines per Label	Up to 7 Lines (Horizontal)
Rotated Characters	Up to 25 Alpha-Numeric Characters (24mm tape)
Label Application Keys	Cable Wrap, Cable Flag, Patch Panel, Punch Block, Faceplate, Database, Barcode, Standard & Advanced Serialize
Serializing Range	Increments 1 or 2 Fields Individually or Simultaneously (Up to 50 Alpha or Numeric Characters, Up to 9 Units/Increment)
Print Bar Codes	Code39, Code128, ITF, UPC-A/E, EAN-8/13, GS1-128 [UCC/EAN-128], Codabar
Media Sizes (width)	24mm, 18mm, 12mm, 9mm, 6mm, 3.5mm
Power Supply	BA-E001 Li-ion Battery Pack, AD-E001 AC Adapter (Both Standard) 6 AA Alkaline Batteries (Optional)
Dimensions/Weight	4.9in x 3.7in x 9.8in (w x h x d) / 2 lbs (without tape and batteries)
Warranty	2 Year Limited Exchange Warranty

## Available tapes\*

**HGe TAPE** HGe tape is a new tape designed for commercial and industrial labeling applications, specifically for the models PT-E100, PT-E300 and PT-E500 to print laminated labels up to 2x faster than any current P-touch® TZ tape model.

3.5mm (0.13in)	6mm (0.23in)	9mm (0.35in)	12mm (0.47in)	18mm (0.7in)	24mm (0.94in)
-------------------	-----------------	-----------------	------------------	-----------------	------------------

**HGe Extra-Strength Adhesive Tapes** – 5 piece bulk packaging, designed for use on plastics, textured and hard to stick surfaces

	3.5mm (0.13in)	6mm (0.23in)	9mm (0.35in)	12mm (0.47in)	18mm (0.7in)	24mm (0.94in)		
BLACK ON WHITE	c	RU	IS	HGeS2115PK	HGeS2215PK	HGeS2315PK	HGeS2415PK	HGeS2515PK
BLACK ON YELLOW	c	RU	IS		HGeS6215PK	HGeS6315PK	HGeS6415PK	HGeS6515PK
BLACK ON MATTE SILVER	c	RU	IS				HGeS9415PK	HGeS9515PK
BLACK ON CLEAR	c	RU	IS		HGeS1215PK	HGeS1315PK	HGeS1415PK	HGeS1515PK

**HGe Standard Adhesive Tapes** – General purpose applications

	3.5mm (0.13in)	6mm (0.23in)	9mm (0.35in)	12mm (0.47in)	18mm (0.7in)	24mm (0.94in)		
BLACK ON WHITE	c	RU	IS		HGe2215PK	HGe2315PK	HGe2415PK	HGe2515PK
BLACK ON YELLOW	c	RU	IS				HGe6415PK	HGe6515PK

**TZe TAPE** TZe tapes feature the same laminated structure and durability of HGe tapes, but without the faster print speeds offered by HGe tapes. TZe tapes are compatible with the PT-E100, PT-E300, PT-E500, PT-7500, PT-7600, PT-18RKT, PT-9700PC and PT-9800PCN, as well as all other P-touch® and P-touch EDGE® TZe compatible labelers.

3.5mm (0.13in)	6mm (0.23in)	9mm (0.35in)	12mm (0.47in)	18mm (0.7in)	24mm (0.94in)
-------------------	-----------------	-----------------	------------------	-----------------	------------------

**Flexible ID Tapes** - Individual tapes designed for wrapping around and adhesive-to-adhesive flag labels

	3.5mm (0.13in)	6mm (0.23in)	9mm (0.35in)	12mm (0.47in)	18mm (0.7in)	24mm (0.94in)	
BLACK ON WHITE	c	RU	IS		TZeFX231	TZeFX241	TZeFX251
BLACK ON YELLOW	c	RU	IS		TZeFX631		TZeFX651

**Extra-Strength Adhesive Tapes** - Individual tapes designed for plastics and textured surfaces

	3.5mm (0.13in)	6mm (0.23in)	9mm (0.35in)	12mm (0.47in)	18mm (0.7in)	24mm (0.94in)			
BLACK ON WHITE	c	RU	IS		TZeS211	TZeS221	TZeS231	TZeS241	TZeS251
BLACK ON CLEAR	c	RU	IS			TZeS121	TZeS131	TZeS141	TZeS151
BLACK ON YELLOW	c	RU	IS			TZeS621	TZeS631	TZeS641	TZeS651
WHITE ON CLEAR	c	RU	IS				TZeS135		
BLACK ON MATTE SILVER	c	RU	IS					TZeS941	TZeS951

**Standard Adhesive Tapes** - Individual tapes designed for use on smooth and flat surfaces

	3.5mm (0.13in)	6mm (0.23in)	9mm (0.35in)	12mm (0.47in)	18mm (0.7in)	24mm (0.94in)				
BLACK ON WHITE				TZe211	TZe221	TZe231	TZe241	TZe251		
BLACK ON CLEAR				TZe111	TZe121	TZe131	TZe141	TZe151		
BLACK ON RED						TZe421		TZe441	TZe451	
BLACK ON YELLOW							TZe631	TZe641	TZe651	
BLACK ON GREEN								TZe741		
BLACK ON BLUE									TZe541	
BLACK ON FL. ORANGE									TZe841	TZe851
WHITE ON BLACK				TZe315	TZe325	TZe335	TZe345	TZe355		
WHITE ON CLEAR							TZe135	TZe145		
RED ON WHITE							TZe232	TZe242	TZe252	
BLUE ON WHITE								TZe243		
GOLD ON BLACK								TZe334	TZe344	TZe354

**Tamper Evident Tapes** - Individual tapes designed to reveal a security pattern when the label is removed or disturbed

	3.5mm (0.13in)	6mm (0.23in)	9mm (0.35in)	12mm (0.47in)	18mm (0.7in)	24mm (0.94in)
BLACK ON WHITE	c	RU	IS			TZeSE4

**Super-Narrow Non-Laminated Tape** - Non-laminated, perfect for labeling CD case spines and other narrow spaces

	3.5mm (0.13in)	6mm (0.23in)	9mm (0.35in)	12mm (0.47in)	18mm (0.7in)	24mm (0.94in)
BLACK ON WHITE				TZeN201		

**Print Head Cleaning Tapes** - Maintains and restores print quality - Approx. 100 uses per tape

	3.5mm (0.13in)	6mm (0.23in)	9mm (0.35in)	12mm (0.47in)	18mm (0.7in)	24mm (0.94in)
PRINT HEAD CLEANING TAPES						TZeCL4

**Stencil Tapes** - Non-adhesive tape designed to mask ink or special fluids for direct part marking

	3.5mm (0.13in)	6mm (0.23in)	9mm (0.35in)	12mm (0.47in)	18mm (0.7in)	24mm (0.94in)
STENCIL TAPE					STe141	STe151

**HSe TAPE** Only for PT-E500 and PT-E300, will not work in other models. HSe tube is a printable heat shrink tubing designed for the model PT-E500 and PT-E300 handheld labeling tools to mark cables, fiber and wires.

**WARNING:** This product contains a chemical known to the State of California to cause cancer.

HEAT SHRINK TUBE WIDTH: 5.8mm (0.23in) 8.8mm (0.34in) 11.7mm (0.46in) 17.7mm (0.69in) 23.6mm (0.92in)

RECOMMENDED FOR (OUTSIDE DIAMETER): 1.7-3.2mm (0.07-0.13in) 2.6-5.1mm (0.10-0.20in) 3.6-7.6mm (0.14-0.28in) 5.4-10.6mm (0.21-0.42in) 7.3-14.3mm (0.28-0.56in)

**HSe Heat Shrink Tube** - Individual heat shrink tube designed for the model PT-E500 and PT-E300. 1.5m (4.9ft) long. 2:1 shrink ratio / 300V / 125°C / VW-1

	3.5mm (0.13in)	6mm (0.23in)	9mm (0.35in)	12mm (0.47in)	18mm (0.7in)	24mm (0.94in)
BLACK ON WHITE	RU	HSe211	HSe221	HSe231	HSe241	HSe251

\*Requires additional purchase. All HGe and TZe laminated tapes are 8m (26.2ft) in length, except Black on Fl. Orange 5m (16.4ft), and are heat resistant, cold resistant, UV resistant, abrasive resistant, chemical resistant and water resistant.

## BROTHER MOBILE SOLUTIONS, INC.

For more information, call 1-800-543-6144,  
or visit [www.brothermobilesolutions.com](http://www.brothermobilesolutions.com)  
[www.edgelaabeling.com](http://www.edgelaabeling.com)

Brother™ is a trademarks or registered trademark of Brother Industries, Ltd. in the United States. All other trademarks and registered trademarks are the properties of their respective companies.

© 2013 Brother Mobile Solutions, Inc., 100 Technology Drive, Suite 250A, Broomfield, CO 80021

**brother**  
at your side

BMS 12-2013 016